



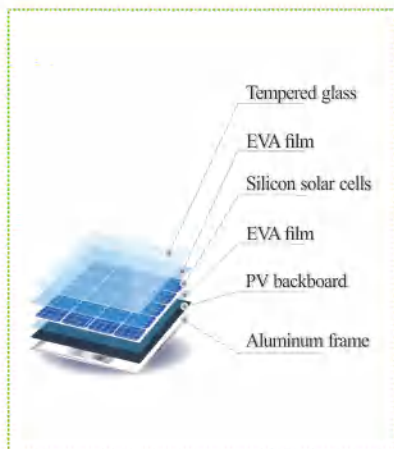
## ELECTRIC CHARACTERISTICS

|                               |      |
|-------------------------------|------|
| Max. Power ( Pmax )           | 80   |
| Max. Power Voltage ( Vmp )    | 18.1 |
| Max. Power Current ( Imp )    | 4.42 |
| Open Circuit Voltage ( Voc )  | 22.2 |
| Short Circuit Current ( Isc ) | 4.71 |

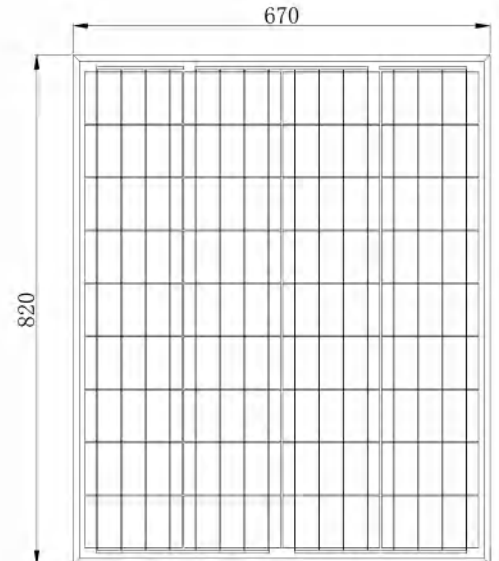
## SPECIFICATION

Model No. B6PY08018L001

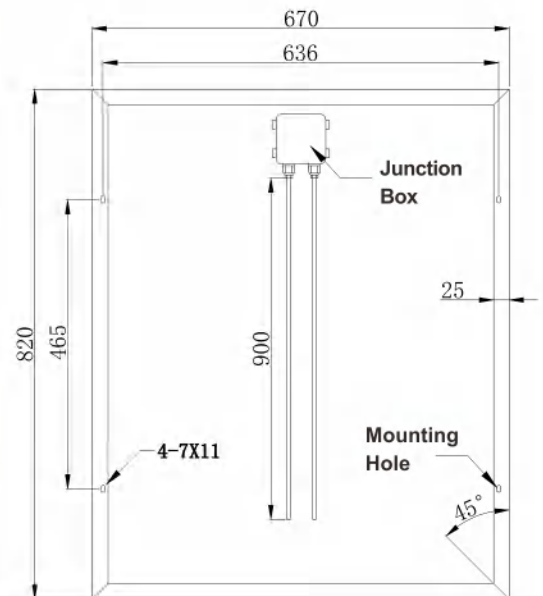
|                   |            |
|-------------------|------------|
| Cell Type         | POLY       |
| Dimension (mm)    | 820*670*30 |
| Cable Length (mm) | 900        |
| Type of Connector | None/MC4   |
| Weight (kg)       | 6.01       |



Front



Back



- High energy conversion rate
- Customized design
- Green energy
- 25 years lifetime

